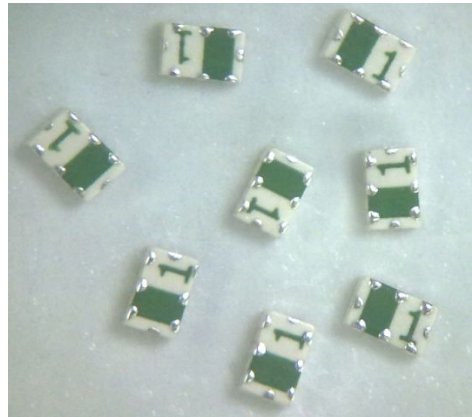


Multilayer Chip Balance Filter 叠层片式巴伦滤波器

FEATURES 特点

- Good performance as small size Band-pass Filter
带通滤波器性能良好
- Low Insertion Loss at the passband and High supression at the rejection area 带内低插入损耗，带外高抑制
- Phase difference 180 degree and amplitude difference 1dB max. 相位差 180 度和幅度差最大为 1dB
- Compact structure and low material loss
紧凑结构和低材料损耗



APPLICATIONS 应用

- WLAN IEEE 802.11b~g and Bluetooth module. 无线局域网 IEEE802.11b~g 和蓝牙模块
- RF and Wireless Communication system. 射频和无线通讯系统

Product Identification 产品标识

MBF 21 M2450 H133 - M13
① ② ③ ④ ⑤

① Series name 系列名称

② Dimension 产品尺寸 L×W: 【22: 2.5mm×2.0mm; 21: 2.0mm×1.25mm; 18: 1.6mm×0.8mm;】

③ Center Frequency 中心工作频率: 2450MHz

④ Via Design Series 过孔结构设计

⑤ Normal Type 标准规格

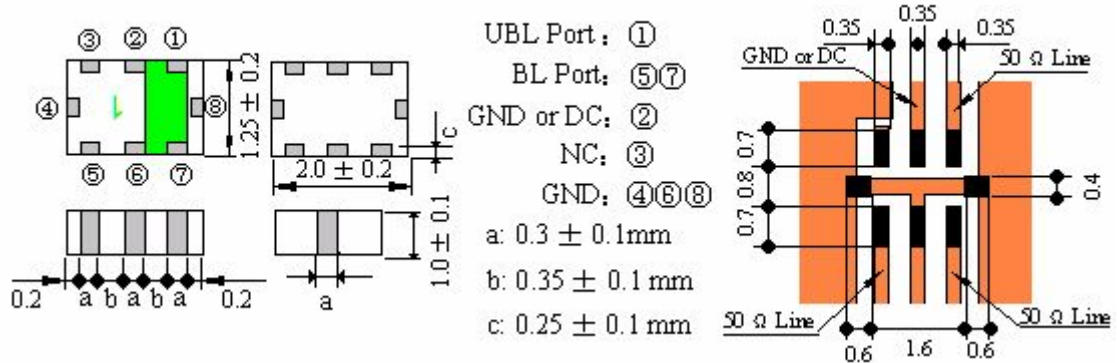
Product Specification 产品规格简表

Part No. 产品型号	Dimensions 尺寸 L×W(mm)	Unbalance Port Impedance 不平衡端阻抗(Ω)	Balance Port Impedance 平衡端阻抗(Ω)	Center Frequency 中心频率 fo (MHz)	Insertion Loss 插入衰耗 (dB)
MBF21M2450H133-M13	2.0×1.25	50	Conjugate to MT6612	2450 MHz	3.0max.(@25 ° C)
MBF21M2450P69-M26	2.0×1.25	50	50 (25+25)	2450 MHz	2.6max.(@25 ° C)
MBP21M2450H133-M28	2.0×1.25	50	50 (25+25)	2450 MHz	2.5max.(@25 ° C)

Multilayer Chip Balance Filter 叠层片式巴伦滤波器

Part No. 产品型号: MBF21M2450H132-M13

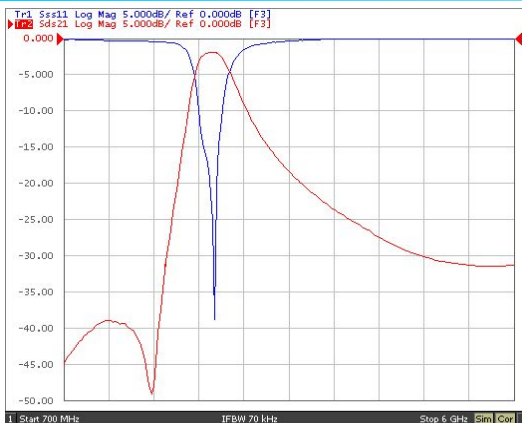
1. Dimensions 外形尺寸 (Unit: mm)



2. Electrical Characteristics 电气性能

No.	Item (项目)	Specifications (特性)
1	Unbalance Port Impedance	50Ω
2	Balance Port Impedance	Conjugate to MT 6612
3	Center Frequency 中心频率 f_0	2450.0 MHz
4	Insertion Loss 插入损耗	≤ 3.0 dB (@ 25°C ± 5°C)
		≤ 3.3 dB (@ -40°C ~ 85°C)
5	Band Width 通带宽度	2400~2500 MHz
6	V.S.W.R at Unbalance Port (in BW) 不平衡端驻波比	≤ 2.0 (2400~2500 MHz)
7	Attenuation 阻带衰耗	≥ 30 (880~960 MHz)
		≥ 30 (1710~1990 MHz)
		≥ 25 (4800~5000 MHz)
8	Phase difference 相位差	180 ± 10 Deg.

3. Characteristic curve 特性曲线



S-Parameters curve S 参数曲线

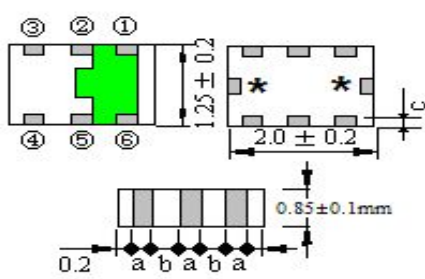


Phase-difference curve 相位差曲线

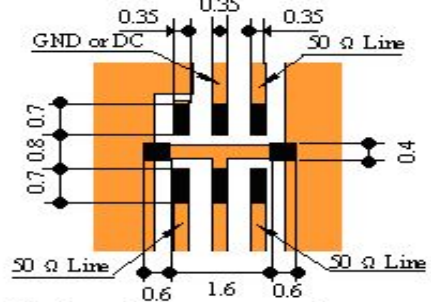
Multilayer Chip Balance Filter 叠层片式巴伦滤波器

Part No. 产品型号: MBF21M2450P69-M26

1. Dimensions 外形尺寸 (Unit: mm)



UBL Port: ①
BL Port: ④⑥
NC or DC: ②
NC: ③
GND: ⑤
a: 0.3 ± 0.1 mm
b: 0.35 ± 0.1 mm
c: 0.25 ± 0.1 mm

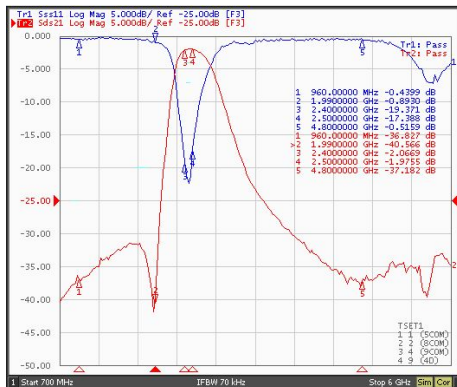


Terminal of "NC" should be fixed to the no connected pattern.

2. Electrical Characteristics 电气性能

No.	Item (项目)	Specifications (特性)
1	Unbalance Port Impedance	50Ω
2	Balance Port Impedance	50Ω
3	Center Frequency 中心频率 f_0	2450.0 MHz
4	Insertion Loss 插入损耗	≤ 2.6 dB (@25°C ± 5°C)
		≤ 2.8 dB (@-40°C ~ 85°C)
5	Band Width 通带宽度	2400~2500 MHz
6	V.S.W.R at Unbalance Port (in BW) 不平衡端驻波比	≤ 2.0 (2400~2500 MHz)
7	Attenuation 阻带衰减	≥ 30 (880~960 MHz)
		≥ 30 (1710~1990 MHz)
		≥ 25 (4800~5000 MHz)
8	Phase difference 相位差	180 ± 10 Deg.

3. Characteristic curve 特性曲线



S-Parameters curve S 参数曲线

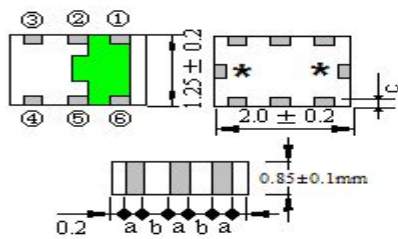


Phase-difference curve 相位差曲线

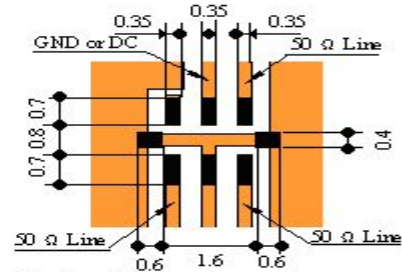
Multilayer Chip Balance Filter 叠层片式巴伦滤波器

Part No. 产品型号: MBF21M2450P69-M28

1. Dimensions 外形尺寸 (Unit: mm)



UBL Port : ①
BL Port : ④⑤
NC or DC : ②
NC : ③
GND : ⑥
a: 0.3 ± 0.1 mm
b: 0.35 ± 0.1 mm
c: 0.25 ± 0.1 mm



Terminal of "NC" should be fixed to the no connected pattern.

2. Electrical Characteristics 电气性能

No.	Item (项目)	Specifications (特性)
1	Unbalance Port Impedance	50Ω
2	Balance Port Impedance	50Ω
3	Center Frequency 中心频率 f_0	2450.0 MHz
4	Insertion Loss 插入损耗	≤ 2.5 dB (@25°C±5°C)
		≤ 2.8 dB (@-40°C~85°C)
5	Band Width 通带宽度	2400~2500 MHz
6	V.S.W.R at Unbalance Port (in BW) 不平衡端驻波比	≤ 2.0 (2400~2500 MHz)
7	Attenuation 阻带衰减	≥ 30 (880~960 MHz)
		≥ 30 (1710~1990 MHz)
		≥ 25 (4800~5000 MHz)
8	Phase difference 相位差	180±10 Deg.

3. Characteristic curve 特性曲线



S-Parameters curve S 参数曲线



Phase-difference curve 相位差曲线