

## Multilayer Chip EMI Filter 叠层片式 EMI 滤波器

### FEATURES 特点

- Closed magnetic circuit configuration preventing cross-talk from occurring which permits high density mounting 封闭的电路结构有效抑制串扰,适于高密度封装
- Sharp attenuation characteristics that have a great effect on EMI suppression 优良的衰减特性对抑制EMI干扰有良好效果
- Available for automatic mounting machines in tape and reel packaging 片式结构及盘装方式用于自动封装



### APPLICATIONS 应用

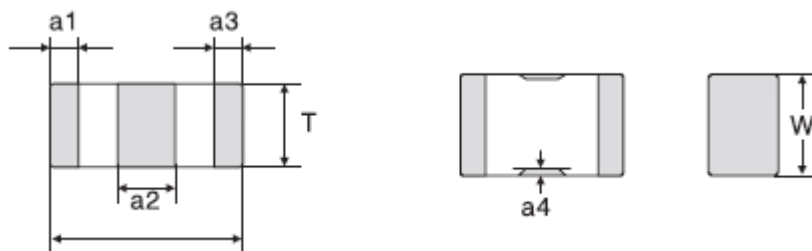
- Widely applied to fields in electronic measurement instruments, computer facilities, switch power supply, measurement & control system 广泛用于电子测量仪器、计算机机房设备、开关电源、测控系统等领域

### Product Identification 产品标识

MGTF    2012    P    101R    I    -    LF  
①            ②            ③            ④            ⑤            ⑥

- ① Series name 系列名称
- ② Dimension 产品尺寸 L×W: 【2012= 2.0mm×1.2mm】
- ③ Circuit structure 电路结构 【P: π型结构 T:T型结构】
- ④ Cut-off frequency 截止频率: 【101R=100MHz】
- ⑤ Packing Style 包装方式: 【T: Taping 编带盘装    B: Bulk 散装】
- ⑥ Lead free products 无铅产品

### Shapes And Dimensions 外形及尺寸示意图



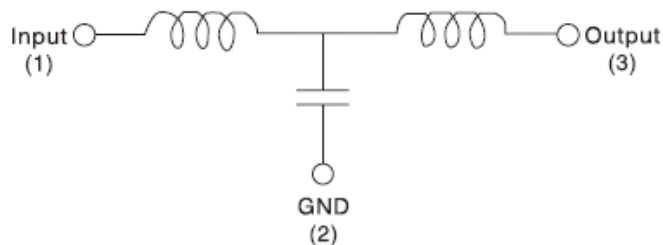
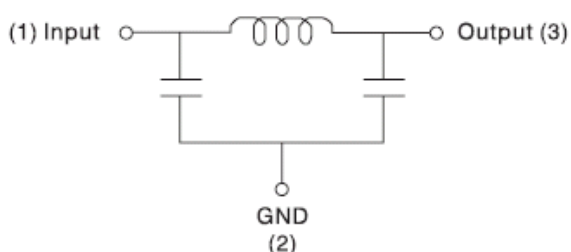
Type 型号	Dimensions (mm) [inch]						
	L长	W宽	T高	a1,a3	a1-a3	a2	a4
2010 [0804]	2.00±0.2 [0.079±0.008]	1.25±0.10 [0.049±0.004]	0.85±0.10 [0.033±0.004]	0.30±0.20 [0.012±0.008]	≤0.2 [≤0.008]	0.50±0.20 [0.02±0.008]	0.25±0.20 [0.01±0.008]
3216 [1206]	3.20±0.30 [0.126±0.012]	1.60±0.30 [0.063±0.012]	1.10±0.10 [0.043±0.004]	0.50±0.30 [0.020±0.012]	≤0.3 [≤0.012]	0.80±0.30 [0.031±0.012]	0.35±0.20 [0.014±0.008]

## Multilayer Chip EMI Filter 叠层片式 EMI 滤波器

### Electrical Characteristics 电气性能

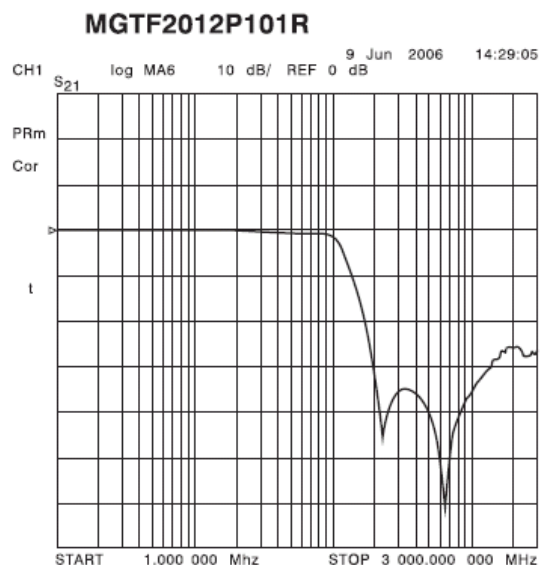
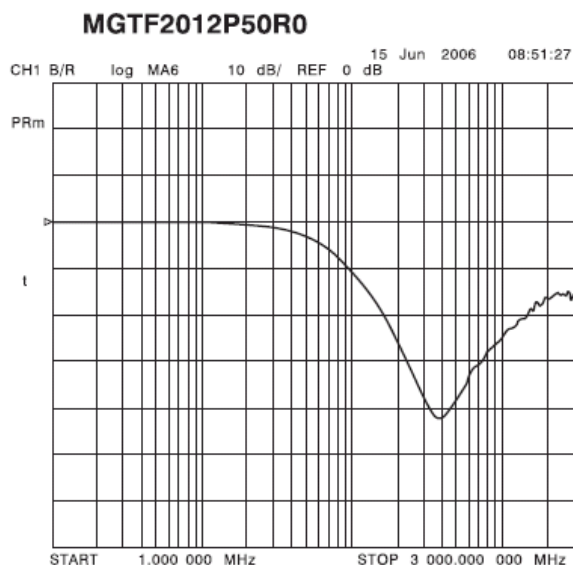
Part No.	Cut-off Frequency Fc (MHz)	插入损耗 Insertion loss (dB) /min.	额定电压 Rated voltage (V)/max.	额定电流 IR (mA)/max.	工作温度 T(°C)
MGTF2012P50R0	50	20(160MHz to 1.3GHz)	16	100	-55~85
MGTF2012P101R	100	20(180MHz to 2GHz)	16	100	-55~85
MGTF3216P50R0	50	20(160MHz to 1.3GHz)	16	100	-55~85
MGTF3216P101R	100	20(180MHz to 2GHz)	16	100	-55~85
MGTF2012T10R0	10	20(40MHz to 900MHz)	10	100	-55~85
MGTF2012T20R0	20	20(80MHz to 1GHz)	10	100	-55~85
MGTF2012T50R0	50	20(150MHz to 1.2GHz)	10	100	-55~85
MGTF2012T101R	100	20(300MHz to 1.7GHz)	10	100	-55~85
MGTF3216T10R0	10	20(100MHz to 1.3GHz)	10	100	-55~85
MGTF3216T20R0	20	20(150MHz to 1.3GHz)	10	100	-55~85
MGTF3216T50R0	50	20(200MHz to 1.3GHz)	10	100	-55~85
MGTF3216T101R	100	20(500MHz to 1.3GHz)	10	100	-55~85

### Inner equivalent circuit 内部等效电路图



### Characteristic curve 特性曲线

#### Insertion loss VS. frequency characteristics



注：本 PDF 文件只提供了产品主要资料，因此在您希望订购或详细了解产品相关资料时，请及时联系麦捷科技以获得最新、最全的产品资料。